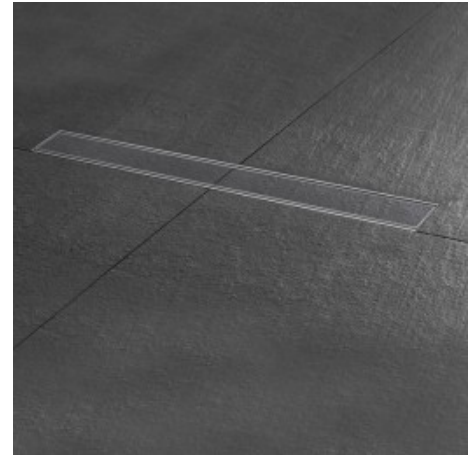


Basic Drain Tile



Grate
Build-in set

Tile
Water seal 50 mm

Easy Drain Basic Drain is perfect for every type of bathroom. Basic Drain comes standard with an easy-to-clean 50 mm water seal and offers outstanding drainage capacity, all certified according to EN 1253. This shower drain is supplied as complete product and can be placed free in the floor or mounted at the wall.

Product benefits

- Trap body - pivoted and adjustable
- Installation - floor and wall
- WPS - 100% watertight with 10 year warranty
- Supplied - Complete product unity
- Certified - EN 1253
- Drainage Syphon - removable and cleanable

Technical Information:

Model:

Linear shower drain

Characteristics:

EN 1253 certified, Sound-proof, Waterproof, Wheelchair accessible

Floor Finish:

Mosaic, Tile / Ceramic

Floor type:

Concrete / Sand cement

Grate material:

Tile

Height adjustable stands:

Included

Installation option:

Floor, Wall

Outlet:

Horizontal outlet

Pre-assembled sealing membrane:

Included

Siphon:

Cleanable drainage siphon

Water seal height:

50 mm

Grate width:

72 mm

Location in a shower:

Between two walls, Free in the floor, One-sided, Three-fold

Min installation depth:

106 mm

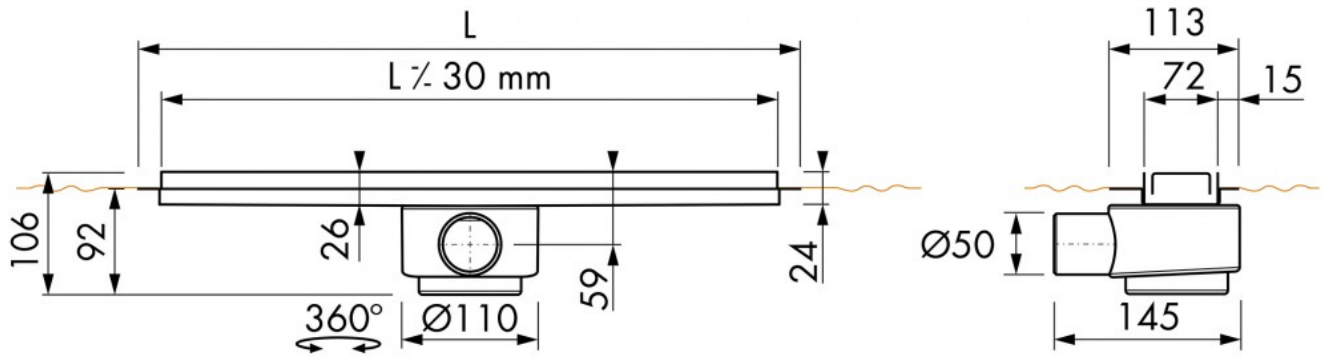
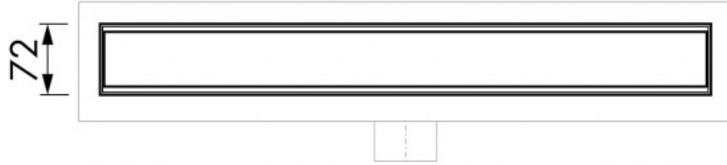
Max drainage capacity entrance:

31 l/min

Max drainage capacity backside:

36 l/min

WPS - Water Protection System



MANUFACTURER
Easy Sanitary Solutions
Nijverheidsstraat 60 | 7575 BK Oldenzaal | The Netherlands
info@esspost.com | www.easydrain.com | www.easydrain.eu



ESS PRODUCTS ARE PATENTED AND REGISTERED TRADEMARKS MADE BY ESS